

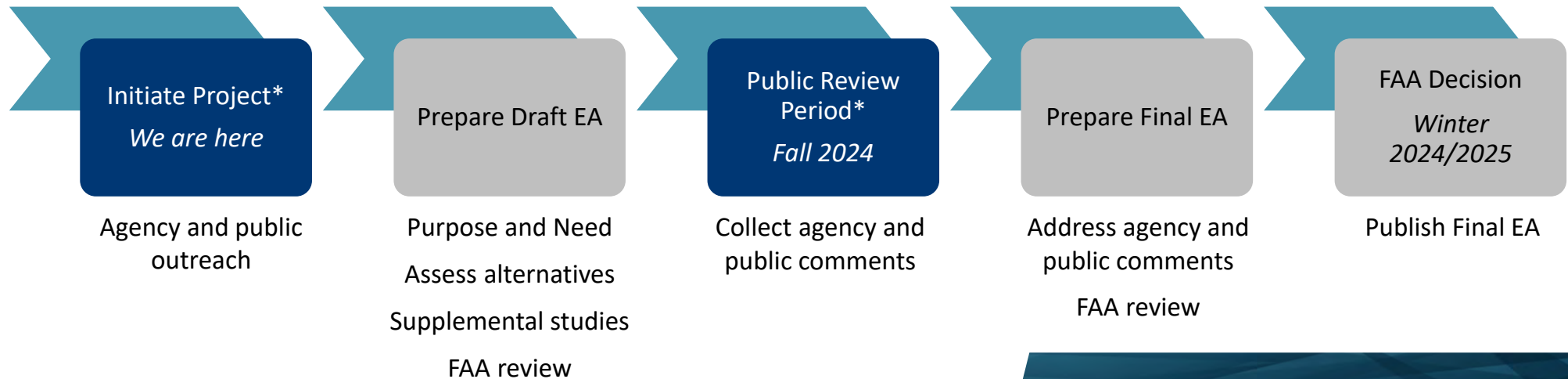
# *Welcome*

Public Informational Meeting for the  
Cargo Development and Perimeter Road Relocation  
Environmental Assessment  
Bradley International Airport

February 29, 2024



# Environmental Assessment Process



\*Blue boxes represent public feedback opportunities.

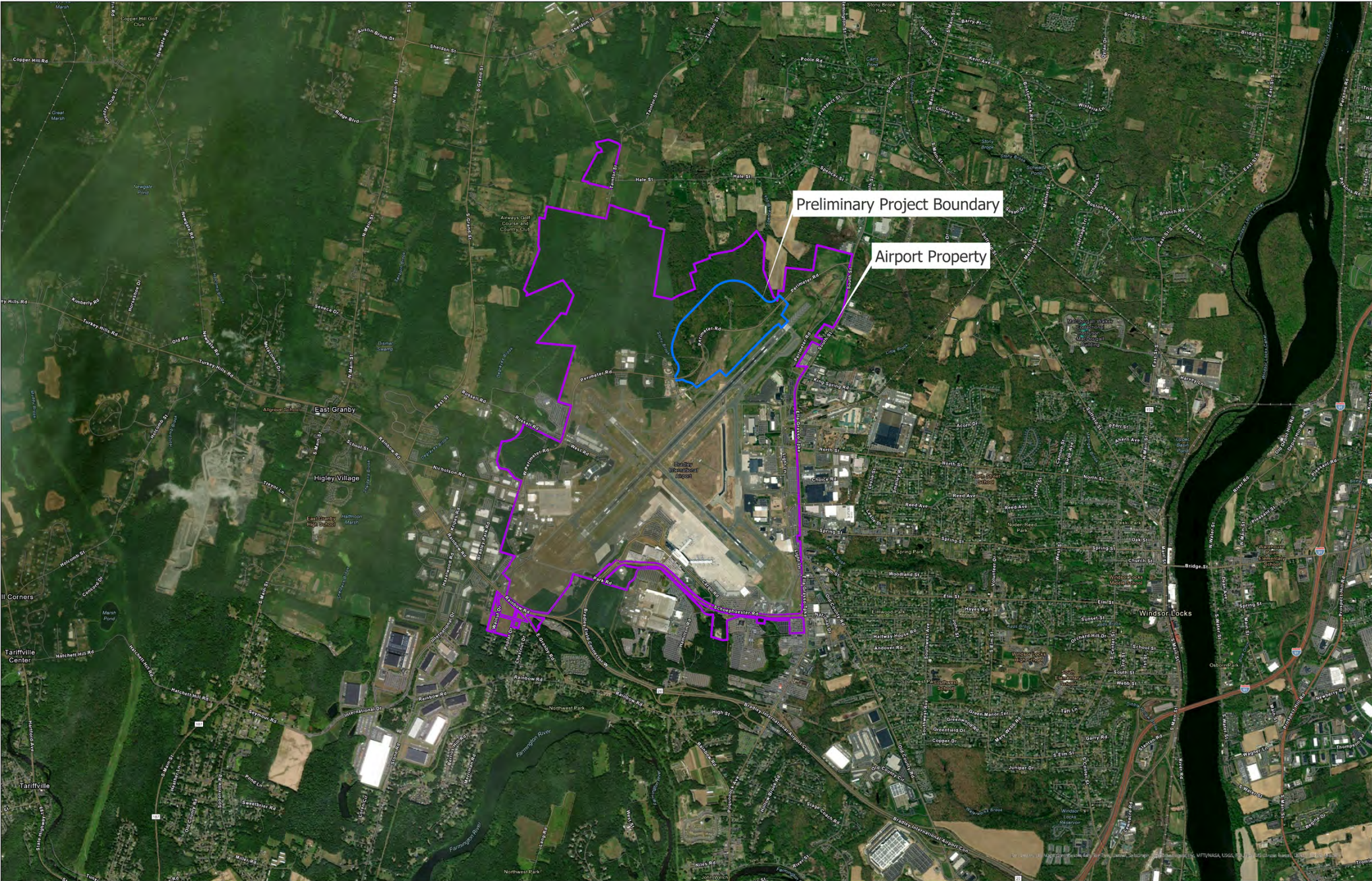
## NEPA – National Environmental Policy Act

- A law that requires federal agencies to consider environmental and socioeconomic effects that may result from proposed projects.

## EA process above is in accordance with the following FAA guidance documents:

- Federal Aviation Administration (FAA) Order 5050.4B, *National Environmental Policy Act (NEPA) Implementing Instructions for Airport Actions*
- FAA Order 1050.1F, *Environmental Policies and Procedures*

# Project Location



# Project Information – Draft Conceptual Layout

**Site grading and preparation**

**Relocation of Perimeter Road**

**Cargo Facilities**

Four buildings, 200,000 square feet each; 45 feet tall

**Airfield pavement**

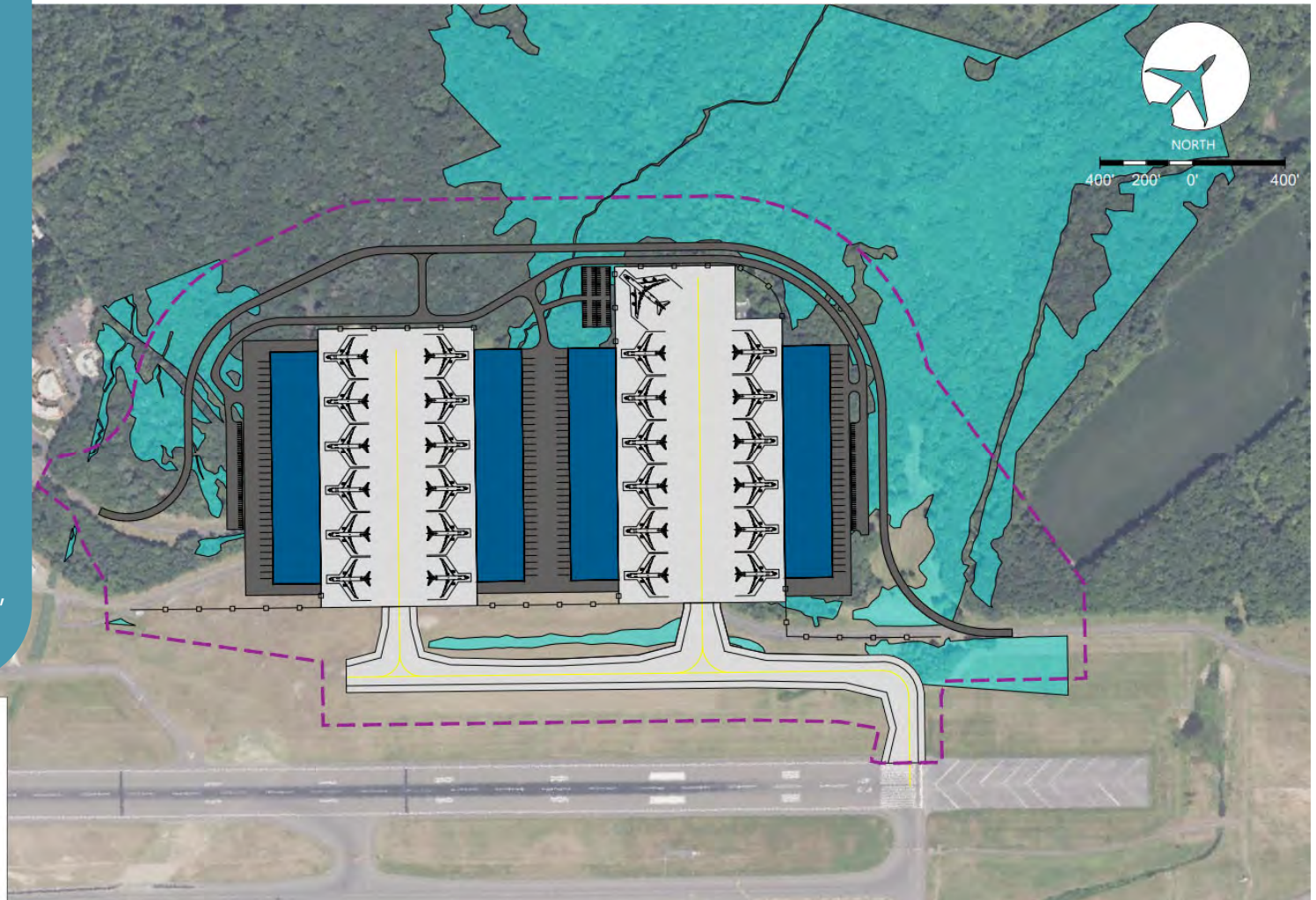
Aircraft parking aprons and taxiway connection to runway

**Roadway pavement**

Truck loading docks, employee parking areas, and internal site roadways

**Utilities and Infrastructure**

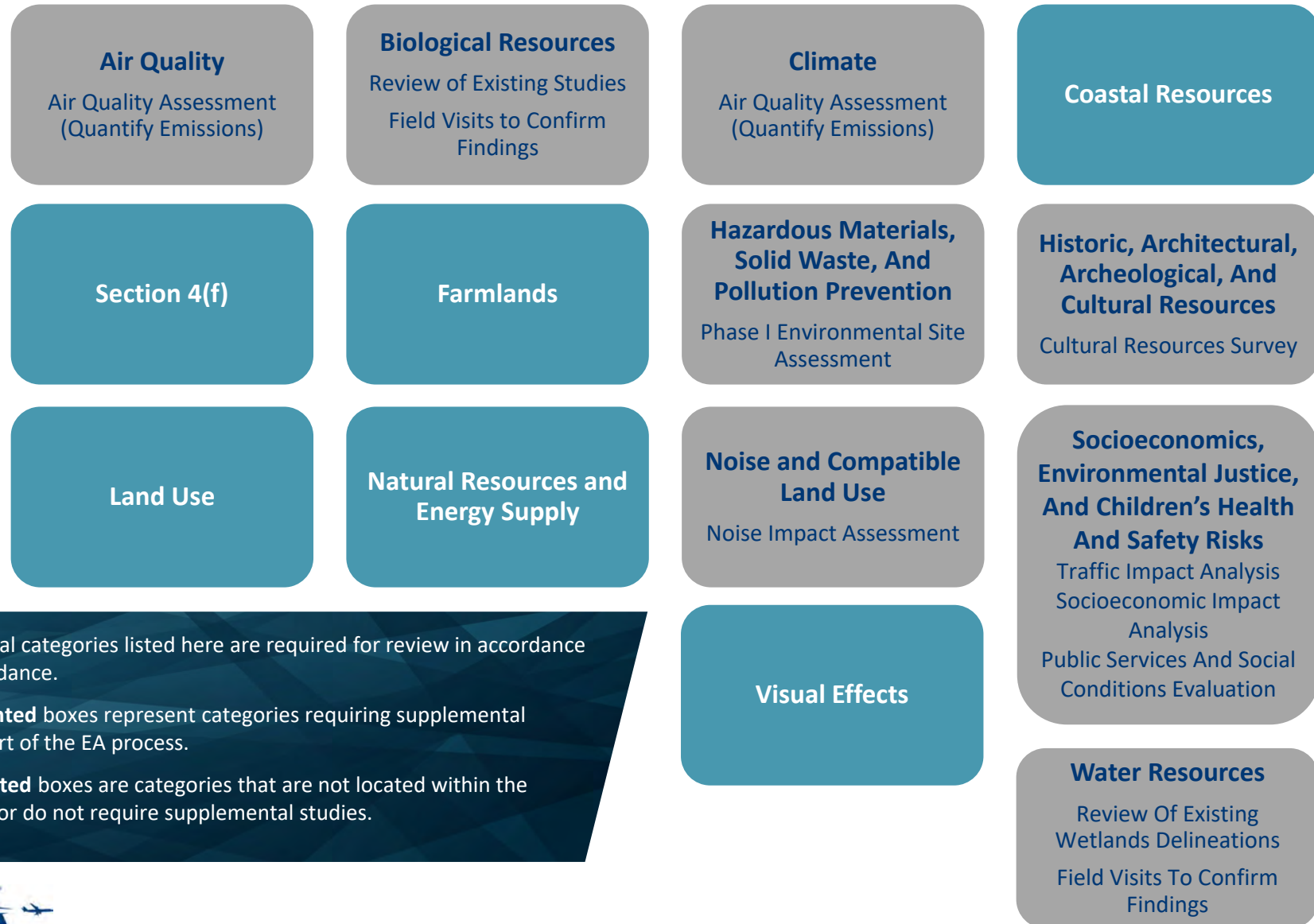
Lighting, signage, fencing, stormwater infrastructure, sewer, water, and natural gas



**Legend**

- EA Study Area
- Cargo Processing Building
- Airfield Pavement (Taxiway & Apron)
- Vehicle Pavement (Parking & Roadway)
- Wetland Delineation, TRC 2020
- Security Fencing

# Environmental Categories and Supplemental Studies

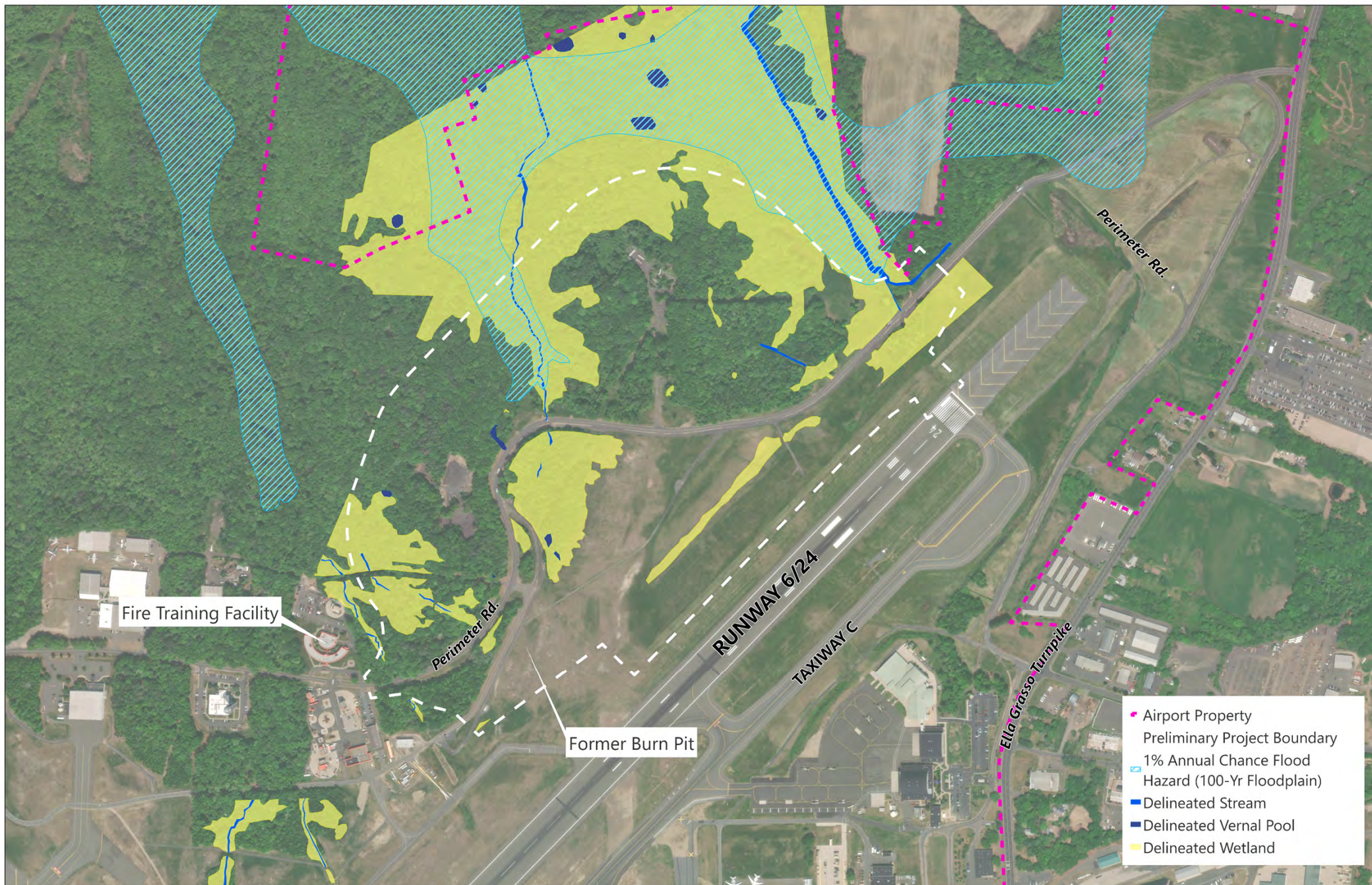


Environmental categories listed here are required for review in accordance with FAA guidance.

**Grey highlighted** boxes represent categories requiring supplemental studies as part of the EA process.

**Teal highlighted** boxes are categories that are not located within the project area or do not require supplemental studies.

# Environmental Overview



# Next Steps

- ◆ Collect comments from agency and public outreach
- ◆ Assess site locations and alternative concept layouts
- ◆ Conduct supplemental studies
- ◆ Publish Draft EA – anticipated Fall 2024

## *Thank you!*

*Questions or comments?*

Email us at [BDLCargoEA@cscos.com](mailto:BDLCargoEA@cscos.com)

*or visit*

<https://bradleyairport.com/about/planning/>



Information Meeting comment period open  
until **March 15, 2024.**